



KASIREDDY NARAYANREDDY COLLEGE OF ENGINEERING & RESEARCH.

(Approved by AICTE & Affiliated to JNTUH)

Abdullapur (V), Abdullapurmet (M), R.R Dist, 501505, Telangana, INDIA.

Email : principal@knrcer.ac.in ; website: www.knrcer.ac.in

7.1.2 Solar Energy Plant Wheeling to the Grid Sensor-Based Energy Conservation Use of LED Bulbs/Power-Efficient Equipment

Solar Plant:

Solar Power Plant installed at KNR CER is of 75 KWp. It generates electric power which is been used by our Campus. This Plant is installed on the Collge Building to provide Non-Conventional Energy or Renewable Energy.



PRINCIPAL
KASIREDDY NARAYAN REDDY COLLEGE
OF ENGINEERING AND RESEARCH
Abdullapur (V), Hayathnagar (M).
R.R. District-501 505.

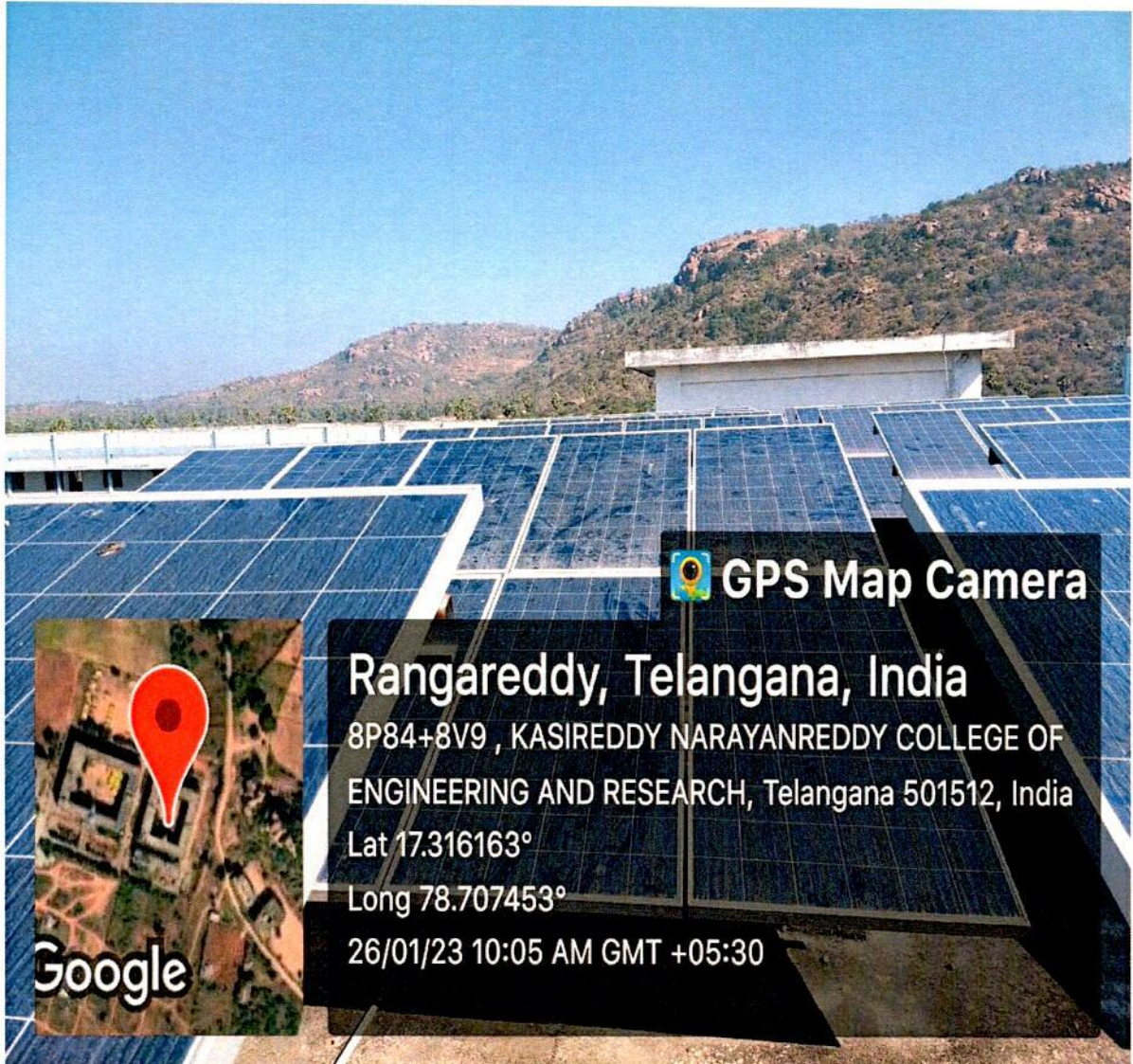


KASIREDDY NARAYANREDDY COLLEGE OF ENGINEERING & RESEARCH.

(Approved by AICTE & Affiliated to JNTUH)

Abdullapur (V), Abdullapurmet (M), R.R Dist, 501505, Telangana, INDIA.

Email : principal@knrcer.ac.in ; website: www.knrcer.ac.in



PRINCIPAL
KASIREDDY NARAYANREDDY COLLEGE
OF ENGINEERING AND RESEARCH
Abdullapur (V), Hayathnagar (M),
R.R. District-501 505.



KASIREDDY NARAYANREDDY COLLEGE OF ENGINEERING & RESEARCH.

(Approved by AICTE & Affiliated to JNTUH)

Abdullapur (V), Abdullapurmet (M), R.R Dist, 501505, Telangana, INDIA.

Email : principal@knrcer.ac.in ; website: www.knrcer.ac.in

2. Biogas Plant:

Biogas plants can have multiple purposes and fulfill a double role in the ecosystem and the economy. On the one hand, biogas plants can supply us with carbon-neutral energy and heating.

If the bio gas plant compresses the biogas to obtain bio-methane, this can substitute natural gas for industrial, commercial, and domestic uses. The fuel can be easily transported to supply gas filling stations.

Biogas is 100% renewable and carbon-neutral, as its combustion doesn't produce new carbon dioxide. Moreover, the production process prevents the release of methane into the atmosphere, with a positive impact on the environment.

The biogas can be combusted in domestic stoves for cooking after minor treatment. Otherwise, it can be used to generate heat, produce electricity, or, in heat and power (CHP) plants, produces both heat and electricity.

The energy produced by biogas plants can be directly fed into the power grid and serve one or more communities, depending on the size of the biogas plant. Furthermore, the heat generated throughout the process can be used to heat pools or buildings. On the other hand, producing biogas makes these facilities part of waste management programs that keep garbage from landfills. Biomass that would otherwise be released in the environment is stored and processed in ways that have minimal impact on nature. Furthermore, biogas plants can also help solve the food waste issue—globally

PRINCIPAL
KASIREDDY NARAYANREDDY COLLEGE
OF ENGINEERING AND RESEARCH
Abdullapur (V), Hayathnagar (M),
R.R. District-501 505.

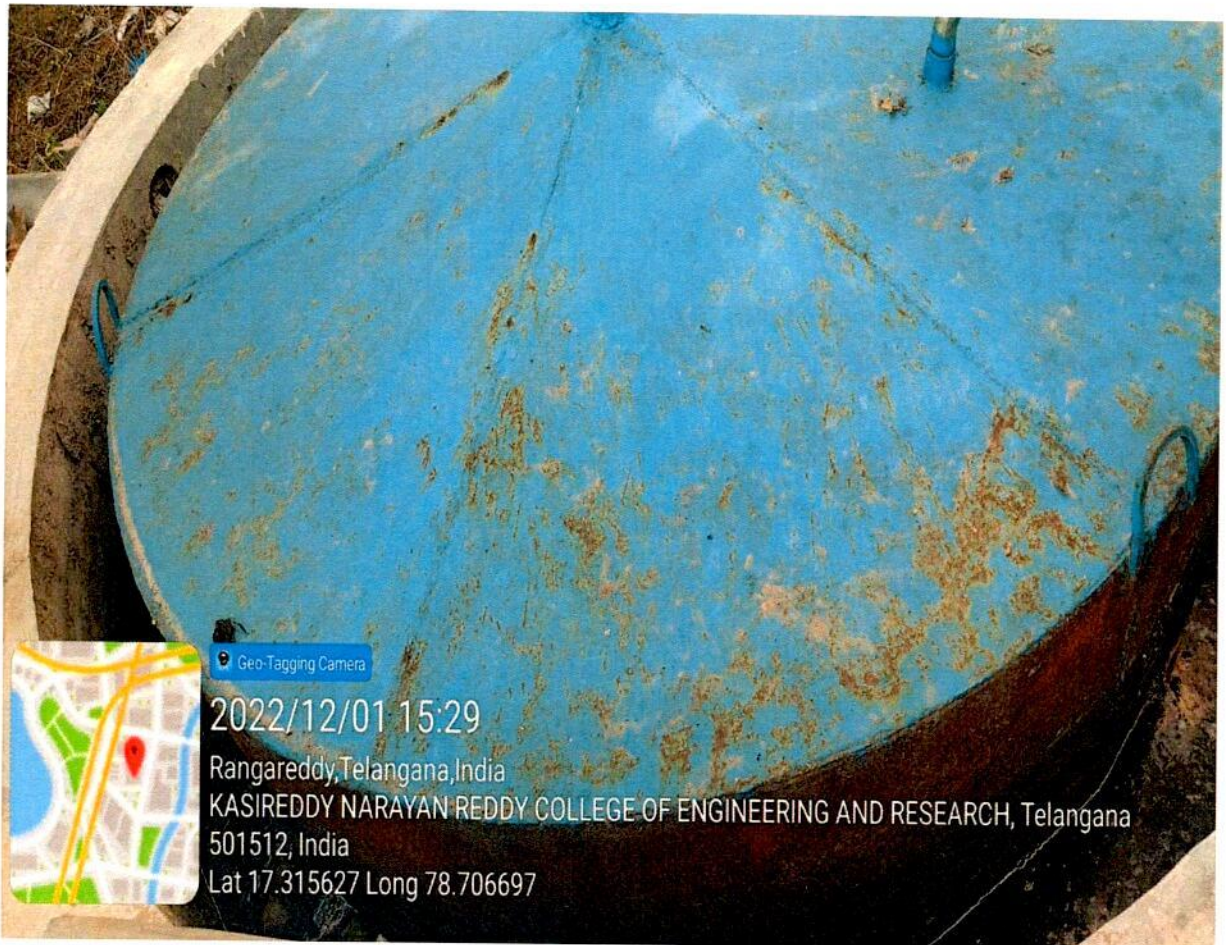


KASIREDDY NARAYANREDDY COLLEGE OF ENGINEERING & RESEARCH.

(Approved by AICTE & Affiliated to JNTUH)

Abdullapur (V), Abdullapurmet (M), R.R Dist, 501505, Telangana, INDIA.

Email : principal@knrcer.ac.in ; website: www.knrcer.ac.in



3. Use of LED Bulbs/Power-Efficient Equipment :

Using LED bulbs and power-efficient equipment has numerous benefits, both for the environment and for cost savings. Here are some key points:

Benefits of LED Bulbs

1. **Energy Efficiency:** LED bulbs use up to 80% less energy than traditional incandescent bulbs, significantly reducing electricity bills.
2. **Long Life span:** LED bulbs last 15,000 to 50,000 hours, much longer than incandescent (1,000 hours) or compact fluorescent (10,000 hours) bulbs, leading to less frequent replacements.

PRINCIPAL
KASIREDDY NARAYANREDDY COLLEGE
OF ENGINEERING AND RESEARCH
Abdullapur (V), Hajathnagar (M).
R.R. District-501 505.



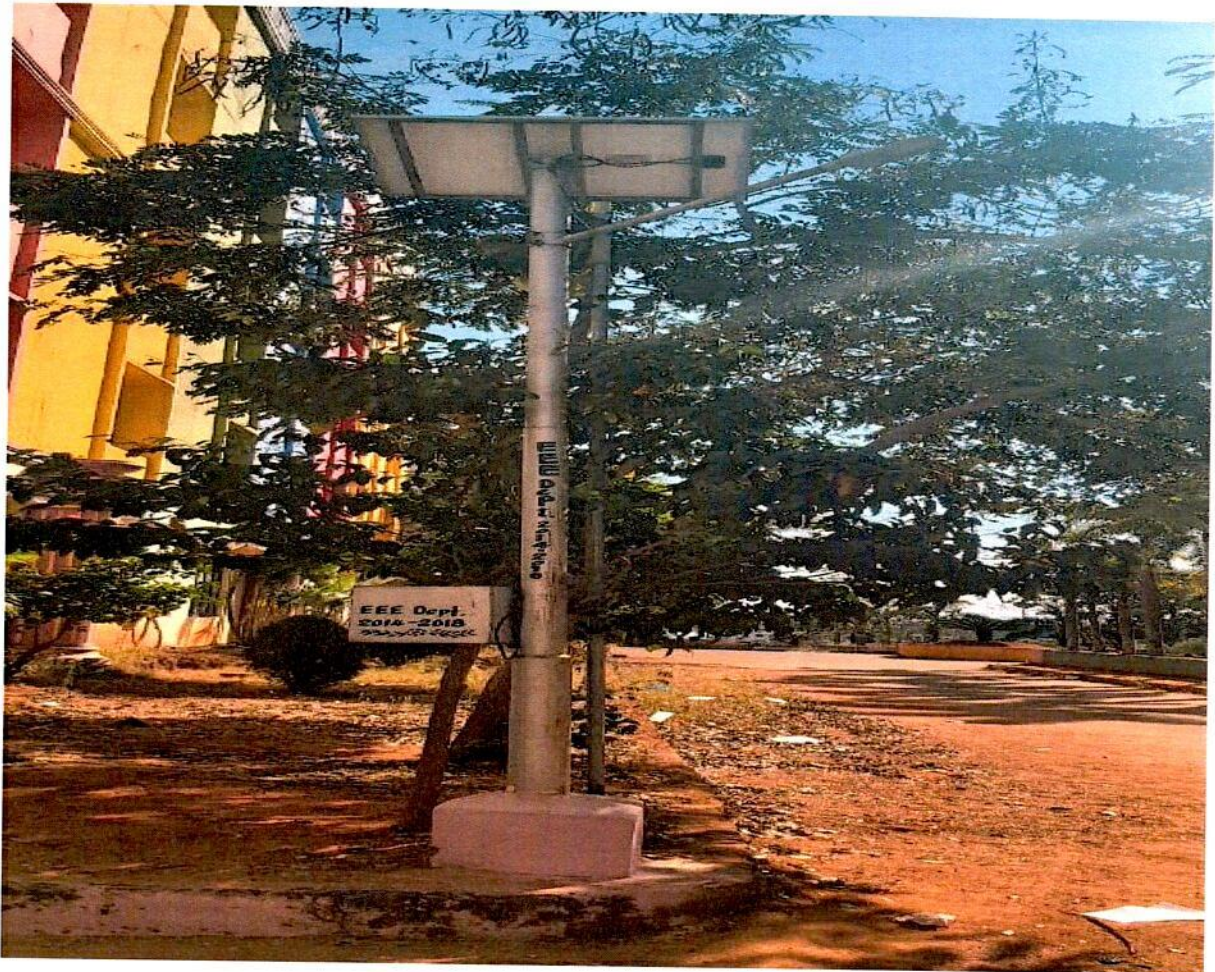
KASIREDDY NARAYANREDDY COLLEGE OF ENGINEERING & RESEARCH.

(Approved by AICTE & Affiliated to JNTUH)

Abdullapur (V), Abdullapurmet (M), R.R Dist, 501505, Telangana, INDIA.

Email : principal@knrcer.ac.in ; website: www.knrcer.ac.in

3. **Lower Heat Emission:** LEDs emit very little heat compared to incandescent bulbs, reducing the need for air conditioning and improving safety.
4. **Environmental Impact:** Using less energy reduces green house gas emissions from power plants. LEDs are also often free of toxic materials like mercury, making disposal easier.
5. **Variety and Versatility:** LEDs come in various colours and can be used in multiple applications, from residential to commercial and outdoor settings.



LED Street Light at KNRCER

PRINCIPAL
KASIREDDY NARAYANREDDY COLLEGE
OF ENGINEERING & RESEARCH
Abdullapur (V), Hayathnagar (M).
R.R. District-501 505.

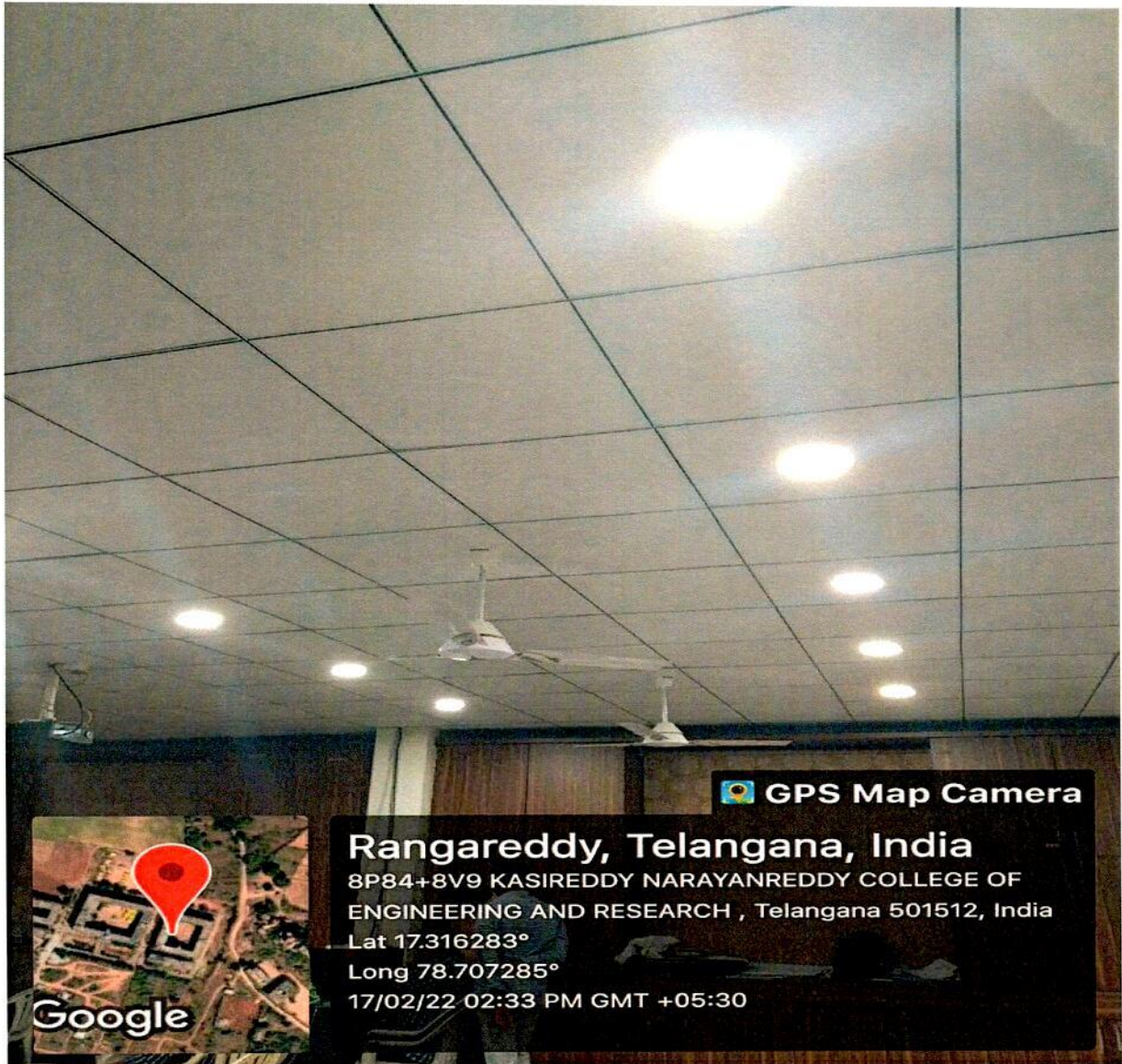


KASIREDDY NARAYANREDDY COLLEGE OF ENGINEERING & RESEARCH.

(Approved by AICTE & Affiliated to JNTUH)

Abdullapur (V), Abdullapurmet (M), R.R Dist, 501505, Telangana, INDIA.

Email : principal@knrcer.ac.in ; website: www.knrcer.ac.in



LED Bulbs Usage at KNRCER

PRINCIPAL
KASIREDDY NARAYANREDDY COLLEGE
OF ENGINEERING AND RESEARCH
Abdullapur (V), Abdullapurmet (M),
R.R. District-501505.



KASIREDDY NARAYANREDDY COLLEGE OF ENGINEERING & RESEARCH.


(Approved by AICTE & Affiliated to JNTUH)

Abdullapur (V), Abdullapurmet (M), R.R Dist, 501505, Telangana, INDIA.

Email : principal@knrcer.ac.in ; website: www.knrcer.ac.in

4. Wheeling to the Grid:

1. **Energy Sector (Wheeling to the Grid):** In the context of energy, "wheeling" refers to the process of transmitting electricity over a grid to a location other than where it was generated. It's often used in electricity markets, especially when energy produced by one entity is sent through a grid to another. This typically involves an agreement between the power producer and the grid operator, and sometimes a third-party entity that "wheels" the power.
2. **Cycling (Wheeling):** In a more literal sense, "wheeling" is a term that can refer to performing a trick on a bicycle where the rider lifts the front wheel off the ground and balances on the rear wheel. This is often seen in BMX or stunt cycling.
3. **Metaphorical/Informal Meaning:** The phrase could also be used in a figurative or informal sense, implying a process of connecting or transitioning into a larger system, or "getting onto the grid" in some way.


PRINCIPAL
KASIREDDY NARAYANREDDY COLLEGE
OF ENGINEERING AND RESEARCH
Abdullapur (V), Abdullapurmet (M),
R.R. District-501505.



KASIREDDY NARAYANREDDY COLLEGE OF ENGINEERING & RESEARCH.

(Approved by AICTE & Affiliated to JNTUH)

Abdullapur (V), Abdullapurmet (M), R.R Dist, 501505, Telangana, INDIA.

Email : principal@knrcer.ac.in ; website: www.knrcer.ac.in



PRINCIPAL
KASIREDDY NARAYAN REDDY COLLEGE
OF ENGINEERING AND RESEARCH
Abdullapur (V), Hayathnagar (M).
R.R. District-501 505.